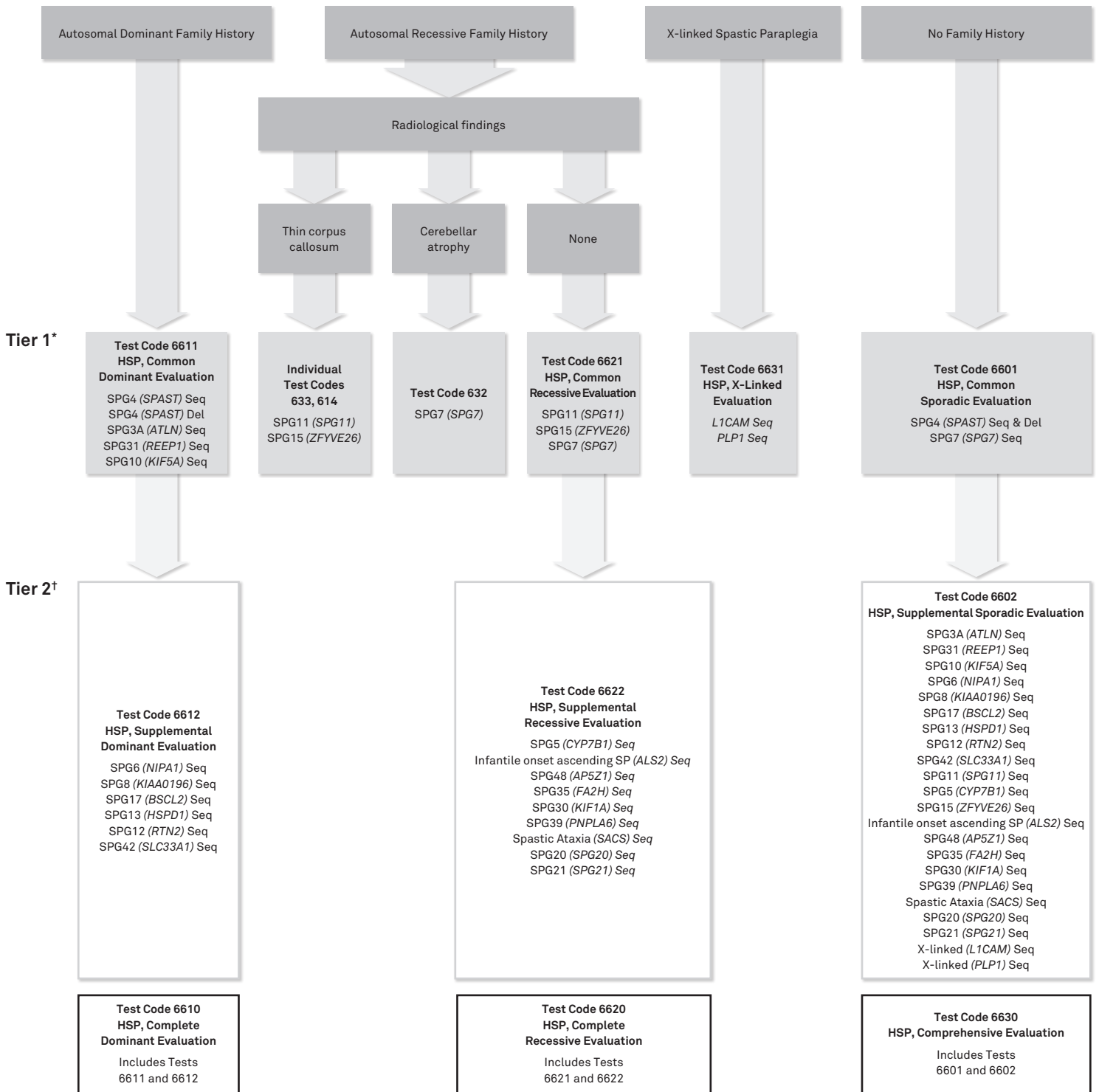


# Test Ordering Algorithm for Hereditary Spastic Paraplegia



To download a test requisition visit us on our website at [AthenaDiagnostics.com](http://AthenaDiagnostics.com)

Abbreviations: Seq, DNA sequence analysis; Del, deletion detection.

\*Tier 1 is derived from:

<sup>a</sup>Gasser T, Finsterer J, Baets J, et al. EFNS guidelines on the molecular diagnosis of ataxias and spastic paraplegias. *Eur J Neurol*. 2010;17:179–188.

<sup>b</sup>van de Warrenburg BPC, van Gaalen J, Boesch S, et al. EFNS/ENS consensus on the diagnosis and management of chronic ataxias in adulthood. *Eur J Neurol*. 2014;21:552–562.

<sup>c</sup>Fogel BL, Lee H, Deignan JL, et al. Exome sequencing in the clinical diagnosis of sporadic or familial cerebellar ataxia. *JAMA neurology* 2014;71:1237–46

<sup>d</sup>Consider the following if Tier 1 is negative.